

Standard components

Device Body	1 set
External start switch	1 set
Inspection TP, Water tank, Fixture	1 set
Ultrasonic probe	2 set
Cable for ultrasonic probe	2 set
USB keyboard	1 set



Spheroidal graphite rate

UVT



Standard specification

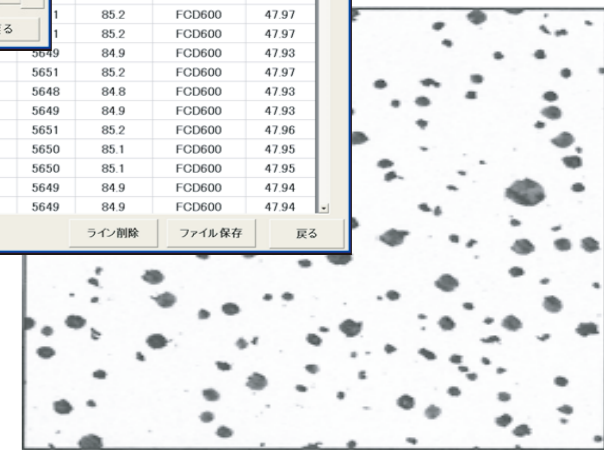
Inspection range	2.5mm 200mm
External start switch	(vel. 5600m/s)
PRF	1KHz
USI waveform indication	RF indication
Judge gate number	2 gate
Inspection range	1 Chanel
External switch number	1~2

External dimensions	H220×W320×D340(mm)
Monitor size	8 inch
HDD capacity	160GB
Weight	about 5.0kg
Lanaguage	Japanese · English · Korean
Power	100-240V



検査線設定値	下限	上限
音速範囲	5000	5790 m/s
音速OK範囲	5620	5790 m/s
球状OK範囲	80	95 %

球状化率	検査線	材料厚み
84.9	FCD600	47.94
84.9	FCD600	47.94
85.4	FCD600	47.97
85.1	FCD600	47.94
85.2	FCD600	47.97
85.2	FCD600	47.97
84.9	FCD600	47.93
85.2	FCD600	47.97
84.8	FCD600	47.93
84.9	FCD600	47.93
85.2	FCD600	47.96
85.1	FCD600	47.95
85.1	FCD600	47.95
84.9	FCD600	47.94
84.9	FCD600	47.94



Contact details for inquires

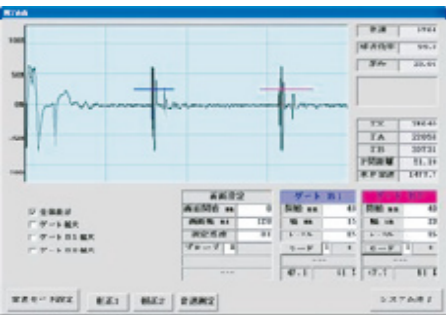
N.K.System CO., LTD.

Address: 105-5 1-Chome, Mishou, Iwakuni-city,
Yamaguchi pref., 741-0083, Japan

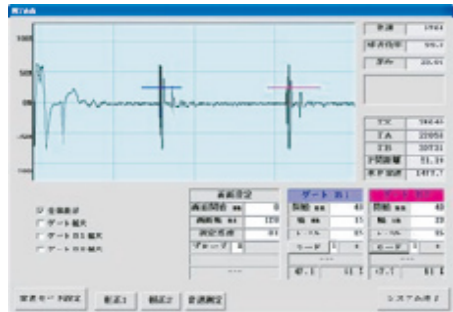
Mail: nksys@d5.dion.ne.jp
TEL: +81(0)827-45-0188
FAX: +81(0)827-46-0108

Distributor

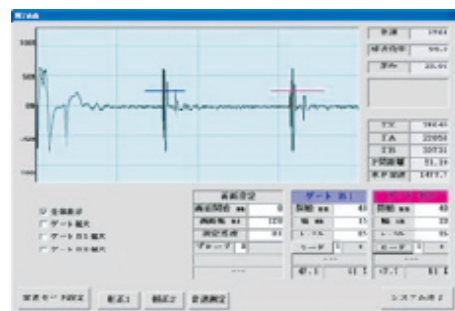
UVT features



• Objective spheroidal graphite rate judgement
It's able to prevent spheroidal graphite rate misjudge standardizing inspection and judgement by PC.



• Compensation diverse inspection condition
Inspected all times at same conditions by automatic sensitivity adjustment program and all times water temperature compensation program.



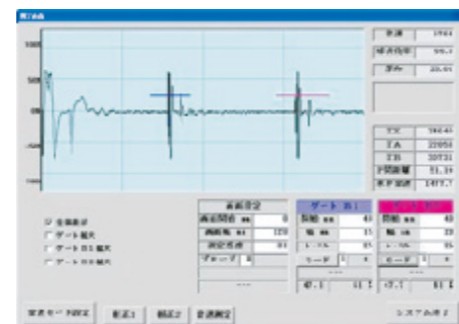
• 8 minutes from pouring to judgement.
It's a able to inspect by pouring • natural cooling to 700° • air cooling to ordinary temperature • submergence quenching.
Polishing time is unnecessary.

検査線	検査線設定値
1 FCD650	5 CV
2 FCD650	5 1E516
3 FCD650	7 1E517
4 FCD700	8 1234567890

• Viable several materials
8 judgement criteria can be saved.
If you read casting assortment date, judgement criteria will switch to the criteria depending on the types.

ライン名	測定時刻	判定結果	音速	球状比率	検査線	材料厚み
1	0:00:16	OK	5649	84.9	FCD600	47.94
2	0:00:54	OK	5649	84.9	FCD600	47.94
3	0:01:32	OK	5652	85.4	FCD600	47.97
4	0:02:09	OK	5650	85.1	FCD600	47.94
5	0:02:47	OK	5651	85.2	FCD600	47.97
6	0:03:24	OK	5651	85.2	FCD600	47.97
7	0:04:02	OK	5649	84.9	FCD600	47.93
8	0:04:39	OK	5651	85.2	FCD600	47.97
9	0:05:17	OK	5648	84.8	FCD600	47.93
10	0:05:54	OK	5649	84.9	FCD600	47.93
11	0:06:32	OK	5651	85.2	FCD600	47.96
12	0:07:09	OK	5650	85.1	FCD600	47.95
13	0:07:47	OK	5650	85.1	FCD600	47.95
14	0:08:24	OK	5649	84.9	FCD600	47.94
15	0:09:01	OK	5649	84.9	FCD600	47.94

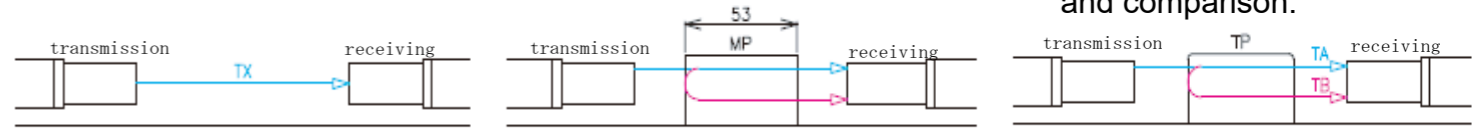
• Inspection for work easily
If you set criteria earlier, inspection start after putting work and push switch button.



Inspection method

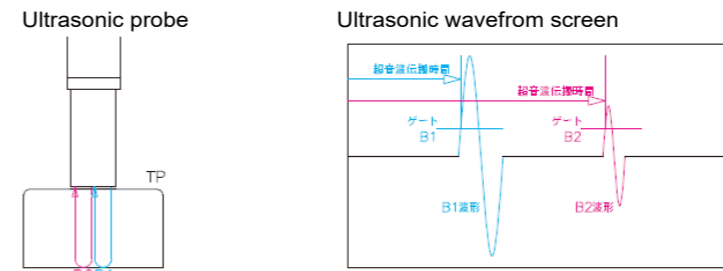
Submersion inspection method

1. Inspect transmission time TX with nothing between probe and probe.
2. Inspect velocity in the water setting MP which measured thickness.
3. Set TP to start inspecting. Spheroidal graphite rate will be displayed by calculation and comparison.



Contact type inspection method

1. Inspect test piece thickness by measuring instrument.
2. Apply contact medium to test piece and contact Ultrasonic probe with work.
3. Start to inspect fixed 2. condition. Then spheroidal graphite rate will be displayed by calculation and comparison.

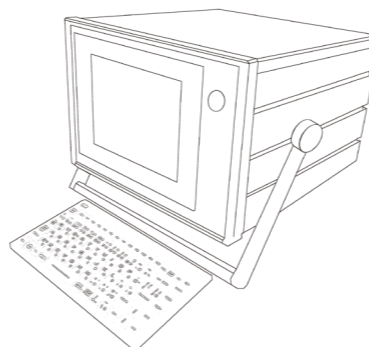


TYPE01
OK
音速
5728
球状比率
92.9

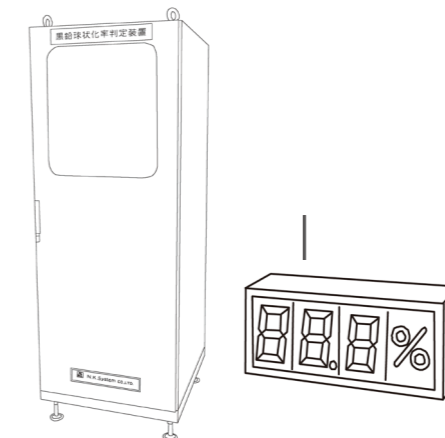
Model instance

We are able to manufacture diversity instruments types including standard specification model managing operating environment in the filed.

Standard model



Dust proof rack



Automization

